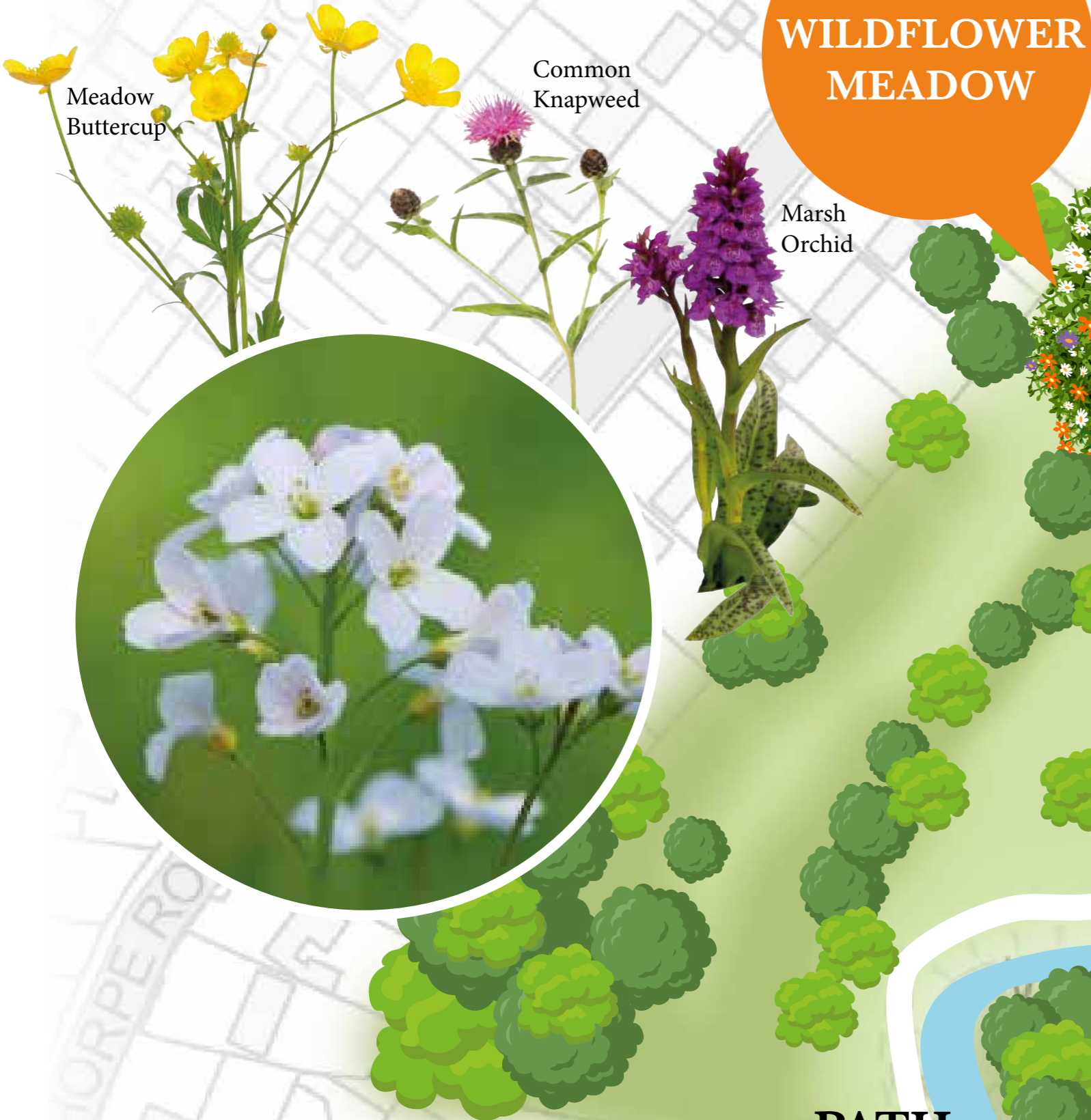


Queen Elizabeth Park Wetland and Meadows Aerial

QUEEN ELIZABETH PARK

Wetland Creation

The Witham / Slea Blue Green Corridor will be creating a wetland environment of ground water fed pools to restore low habitat value grassland into species rich wetland.



WILDFLOWER MEADOW



Wildflower Meadow

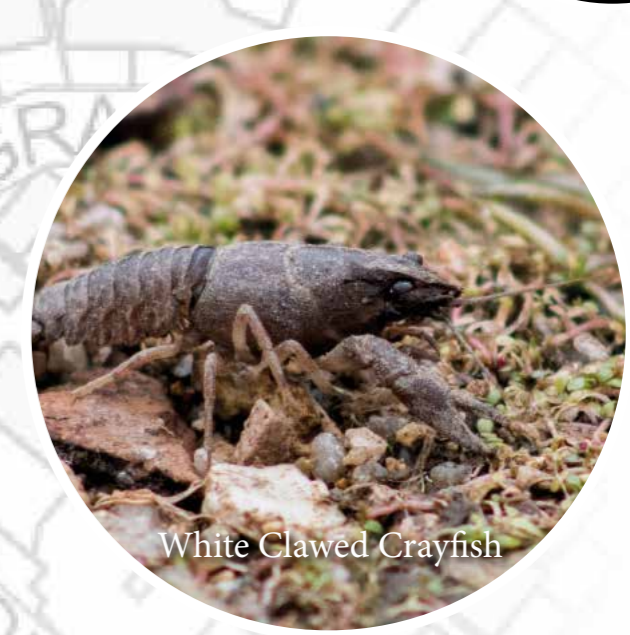
The Blue Green Corridor project will be recreating a species-rich lowland floodplain meadow to complement the floodplain/ wetland meadows created as part of the wetland creation project. It is anticipated that the neutral wetland meadows will support flower-rich swards including meadow buttercup, common sorrel, oxide daisy, meadowsweet marsh marigold.

The mineral rich excess soil excavated during the wetland creation will provide the ideal conditions for the creation of lowland neutral hay meadows. This will include the characteristically hay smelling sweet vernal grass as well as herbs including cowslip, knapweed, red clover, and oxide daisy to name a few. Annual cutting and removal for hay allows bulky species to be kept in check, and more delicate species, such as orchids, to flourish.

Footpath to Manthorpe Road
Footpath to Belton Lane and Princess Drive



Grey Wagtail. Photo taken and gifted by Steve Nesbitt.



White Clawed Crayfish

PATH

WEIR

IN-CHANNEL WORKS UP TO WEIR

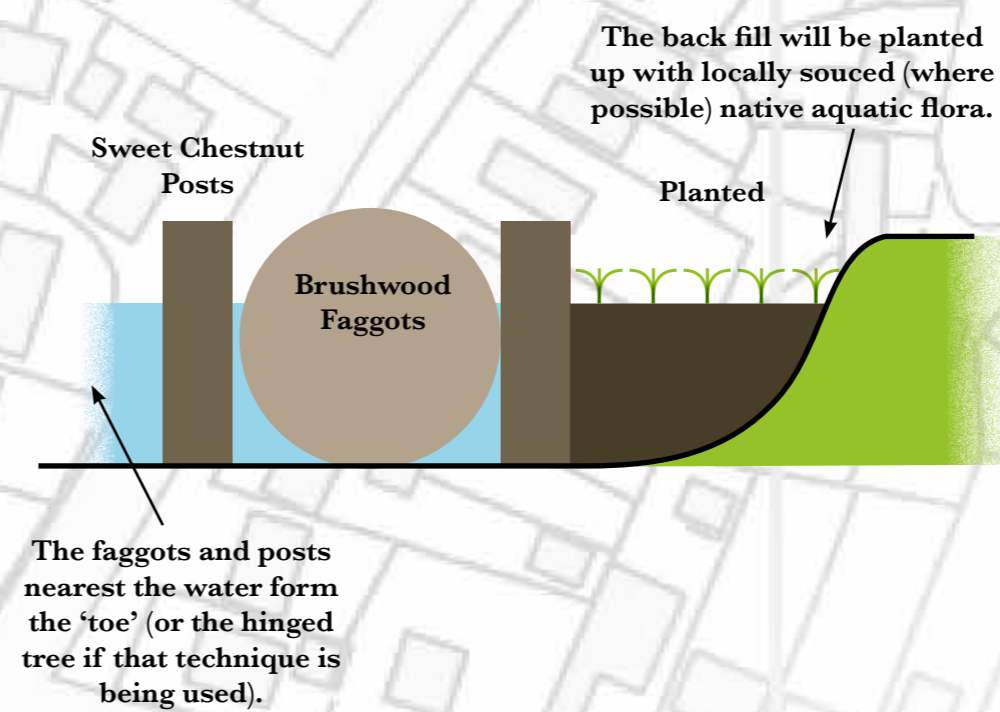
In-Channel Works – Berm creation

A variety of in-channel works, including berm creation, will be undertaken as part of the Blue Green Corridor project over the next three years. The river corridor identified for these works extends from Dysart Park to Queen Elizabeth Park.

creating a habitat suitably attractive to a variety of aquatic animals including scarce and protected species, such as the endangered white clawed crayfish, and support invertebrates and molluscs which are food source for grey wagtails, which have limited habitat in the area and are listed as Red under the Birds of Conservation Concern.

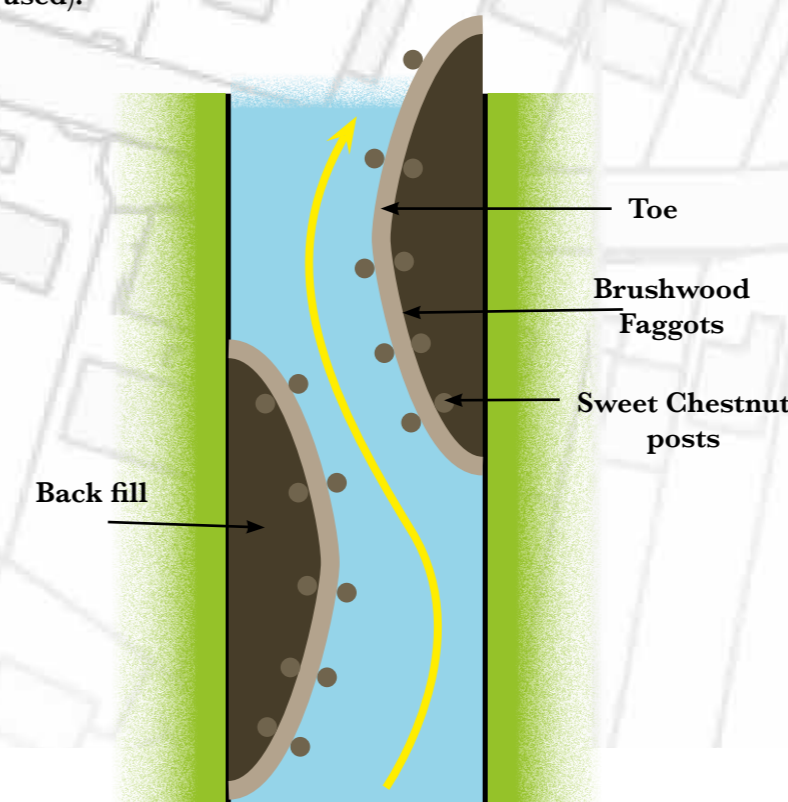
This map illustrates the reach of the river running through Queen Elizabeth Park. Berms are being planned for creation from Belton Lane up to the weir at the southern extent of Belton Grove on the opposite bank of the River to Queen Elizabeth Park.

The berms will be planted with native aquatic species of plants,



The faggots and posts nearest the water form the 'toe' (or the hinged toe if that technique is being used).

The back fill will be planted up with locally sourced (where possible) native aquatic flora.



Would you like to get involved?

If you would like to get involved, there will be opportunities to volunteer to support this project (COVID-19 dependent) – please contact our **Parks Community Engagement Officer** j.ashworth@southkesteven.gov.uk

Footpath to Belton Lane and Wyndham Park

CAR PARK

Crown Copyright and database rights 2021 Ordnance Survey 100018662.

A project part funded by the European Regional Development Fund in partnership with South Kesteven District Council, North Kesteven District Council, National Trust, Environment Agency

